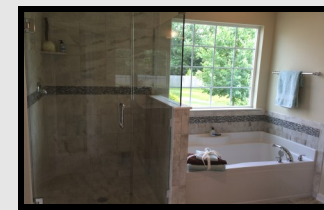


# The Maryanne Model



The Maryanne

The Maryanne model is a stylish home with a 1st floor Master Suite and many charming details. The Maryanne can be customized to meet your lifestyle. The base model has 3 bedrooms, 2-1/2 baths, a 2-story entry and vaulted Great Room, 2-car garage and a spacious laundry room. The open floorplan includes an essential flex room that can be used as a formal dining room, library or home office. The grand Master Suite features a luxurious bath with soaking tub, separate shower and private water closet. A bonus room over the garage can be added as a 4th bedroom or additional flex room. The appealing front elevation includes an elegant hip roof and a covered porch. Cast stone and brick accents may be added. Many custom features are available including 9 ft. ceilings, finished basements, site finished hardwood floors and stairs, custom cabinets and millwork, granite countertops, fireplaces, Trex decks and more. We welcome your custom revisions! Please inquire with our sales staff for more options and information.



- 1st flr Master Suite
- 3 or 4 Bedrooms
- 2.5 Bathrooms
- 2 Car Garage
- Vaulted Great Room
- Can be customized!

For information and pricing contact P.J. Bale  
302-328-0280 x100 or by email [PJ@FirstStateInc.com](mailto:PJ@FirstStateInc.com)  
[www.PJBale.com](http://www.PJBale.com)

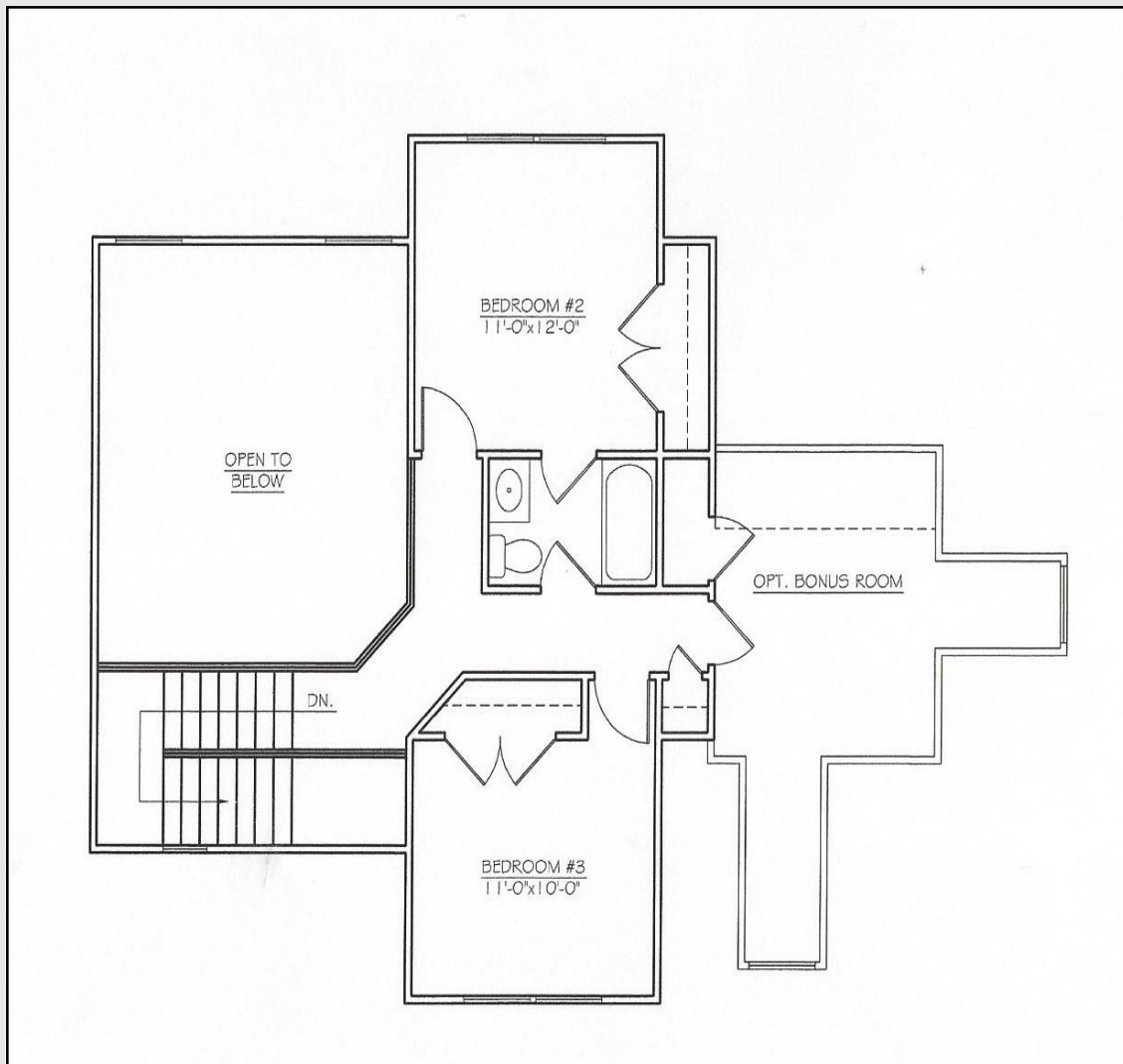
# The Maryanne 1st Floor



**Most Layouts Can Be Customized To Meet Your Individual Needs – Please Ask Our Sales Staff!**

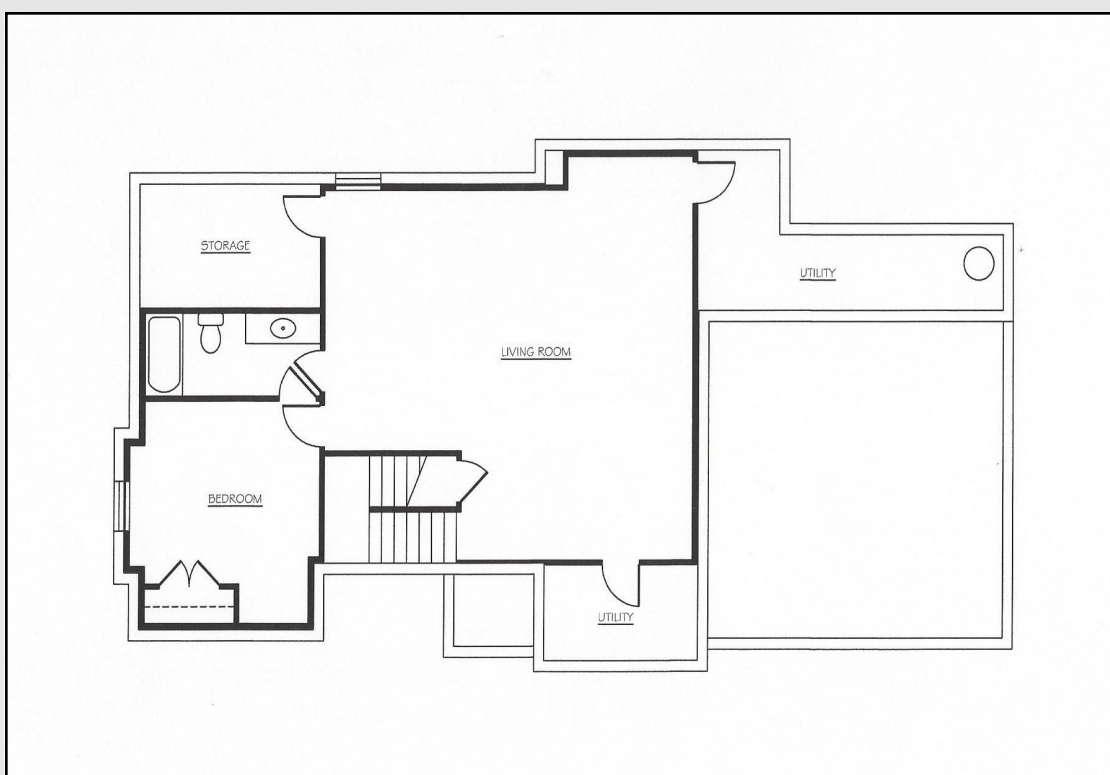
All Pricing and Terms are subject to change without notice. Sizes are approximate when specified.

# The Maryanne 2nd Floor



**Most Layouts Can Be Customized To Meet Your Individual Needs – Please Ask Our Sales Staff!**

# The Maryanne Optional Finished Basement



Most Layouts Can Be Customized To Meet Your Individual Needs – Please Ask Our Sales Staff!