

The Oxford Model



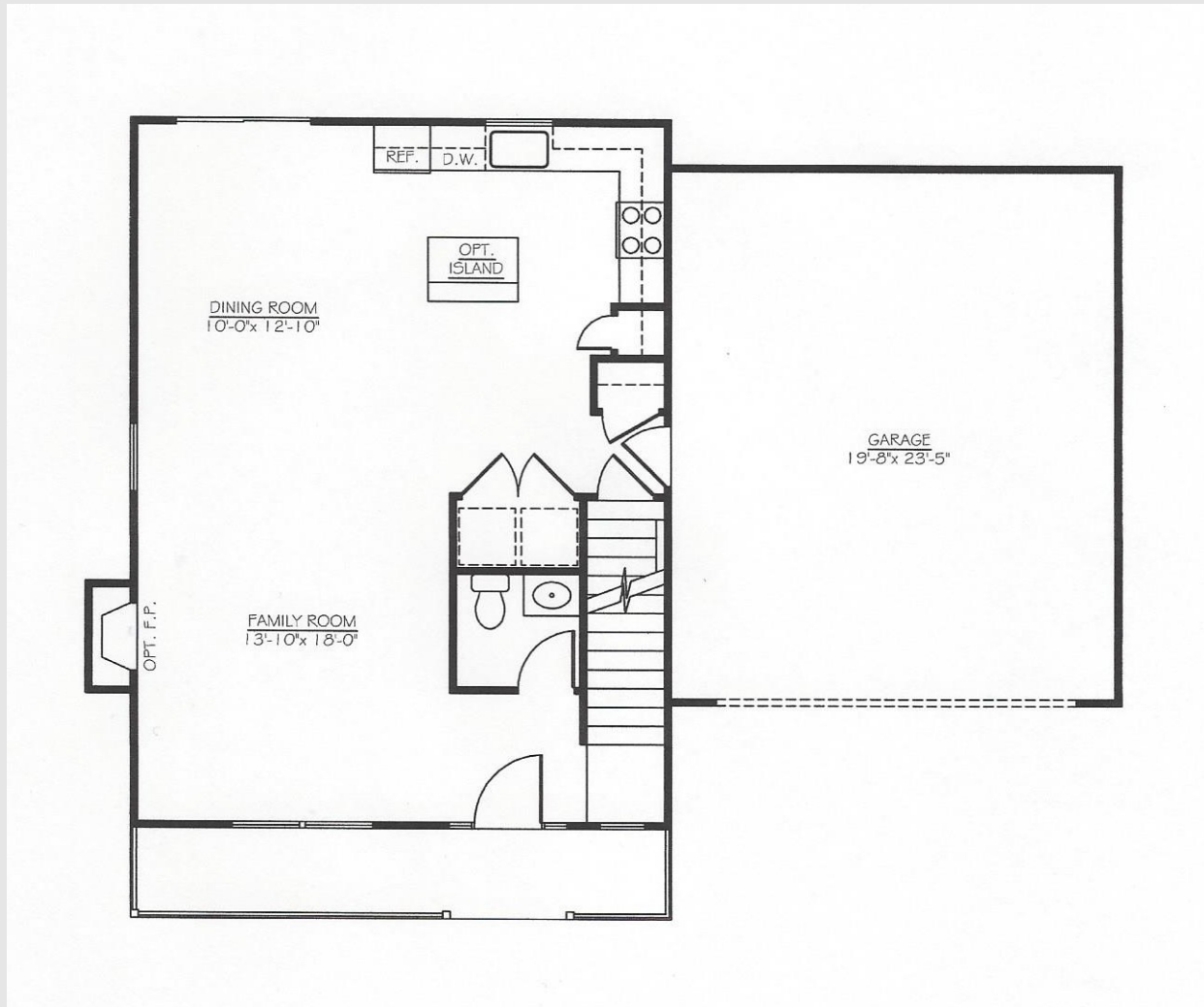
The Oxford

The Oxford model has a popular, open concept floorplan designed to maximize living space. The Oxford can be customized to meet your lifestyle. The base model has 3 bedrooms, 2-1/2 baths, and an extra deep 2-car garage. The kitchen and dining area offers an optional island for additional seating and prep space. The Master Suite features a private bath and walk-in closet. A bonus room over the garage can be added as a 4th bedroom or media room. The bonus room space can also be used to expand the Master Suite and increase the size of the bedrooms. The attractive facade includes a charming front porch. Cast stone and brick accents may be added. Many custom features are available including a finished basement, luxury Master Bath, site finished hardwood floors and stairs, custom cabinets and millwork, granite countertops, gas fireplace, Trex deck and more. We welcome your custom revisions! Please inquire with our sales staff for more options and information.

- Front Porch
- 3 or 4 Bedrooms
- 2.5 Bathrooms
- 2 Car Garage
- Open Concept Floorplan
- Can be customized!

For information and pricing contact P.J. Bale
302-328-0280 x100 or by email PJ@FirstStateInc.com
www.PJBale.com

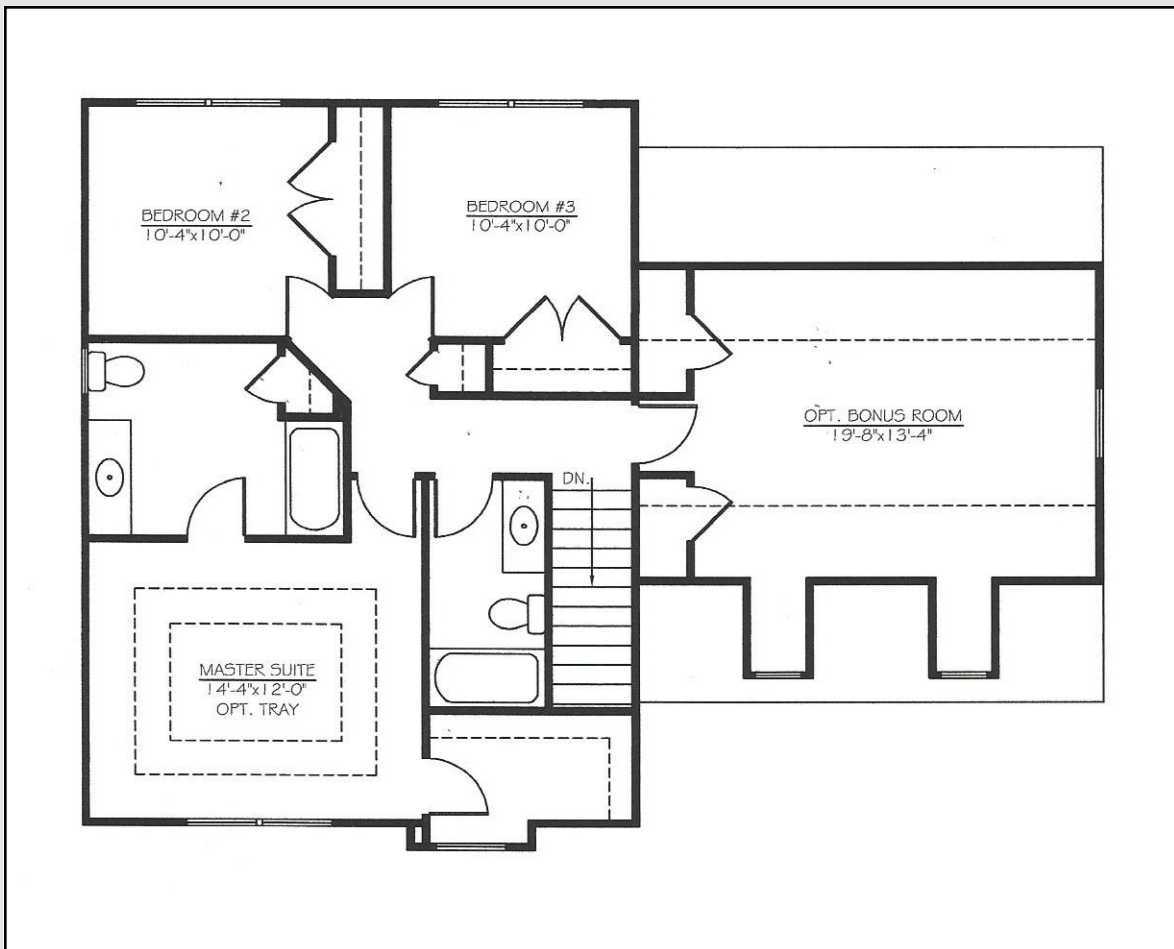
The Oxford 1st Floor



Most Layouts Can Be Customized To Meet Your Individual Needs – Please Ask Our Sales Staff!

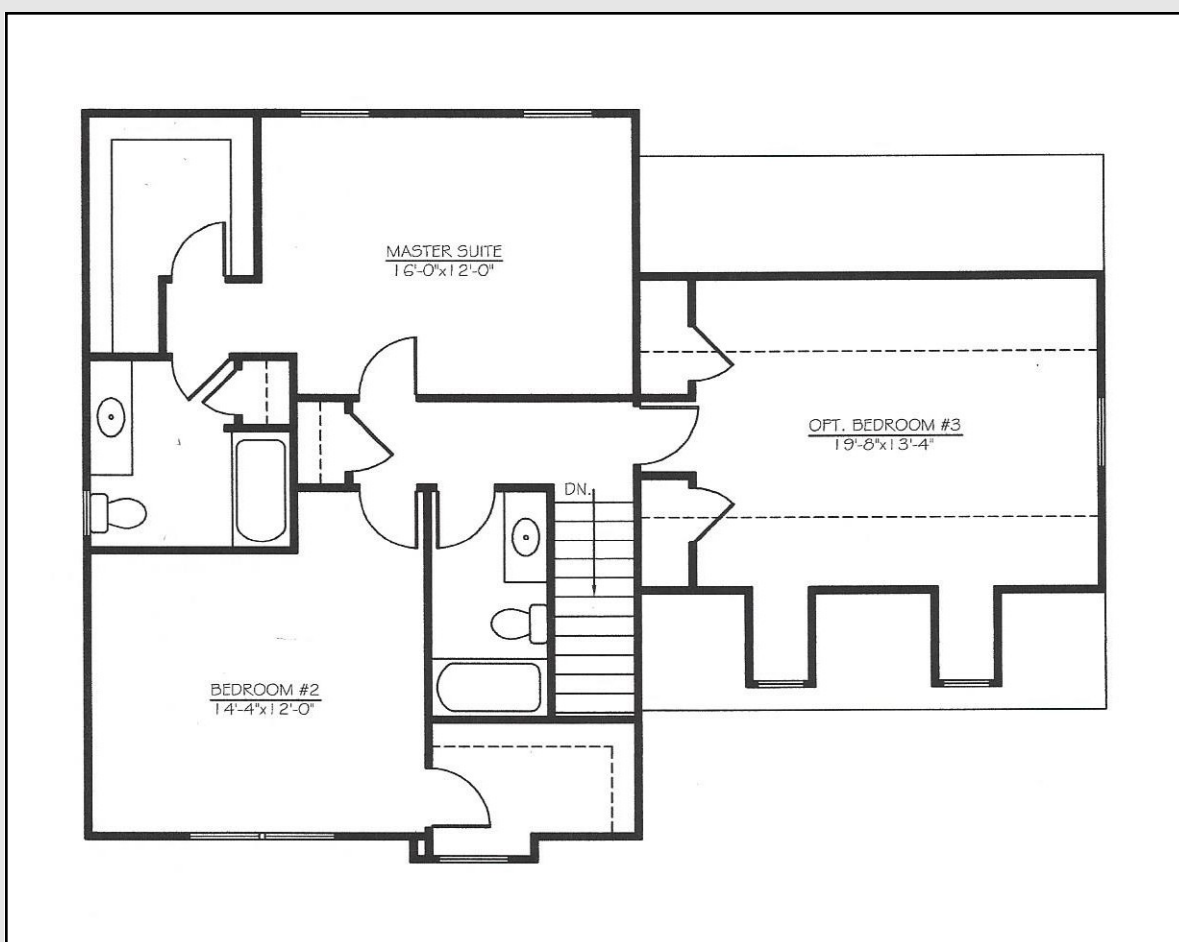
All Pricing and Terms are subject to change without notice. Sizes are approximate when specified.

The Oxford 2nd Floor



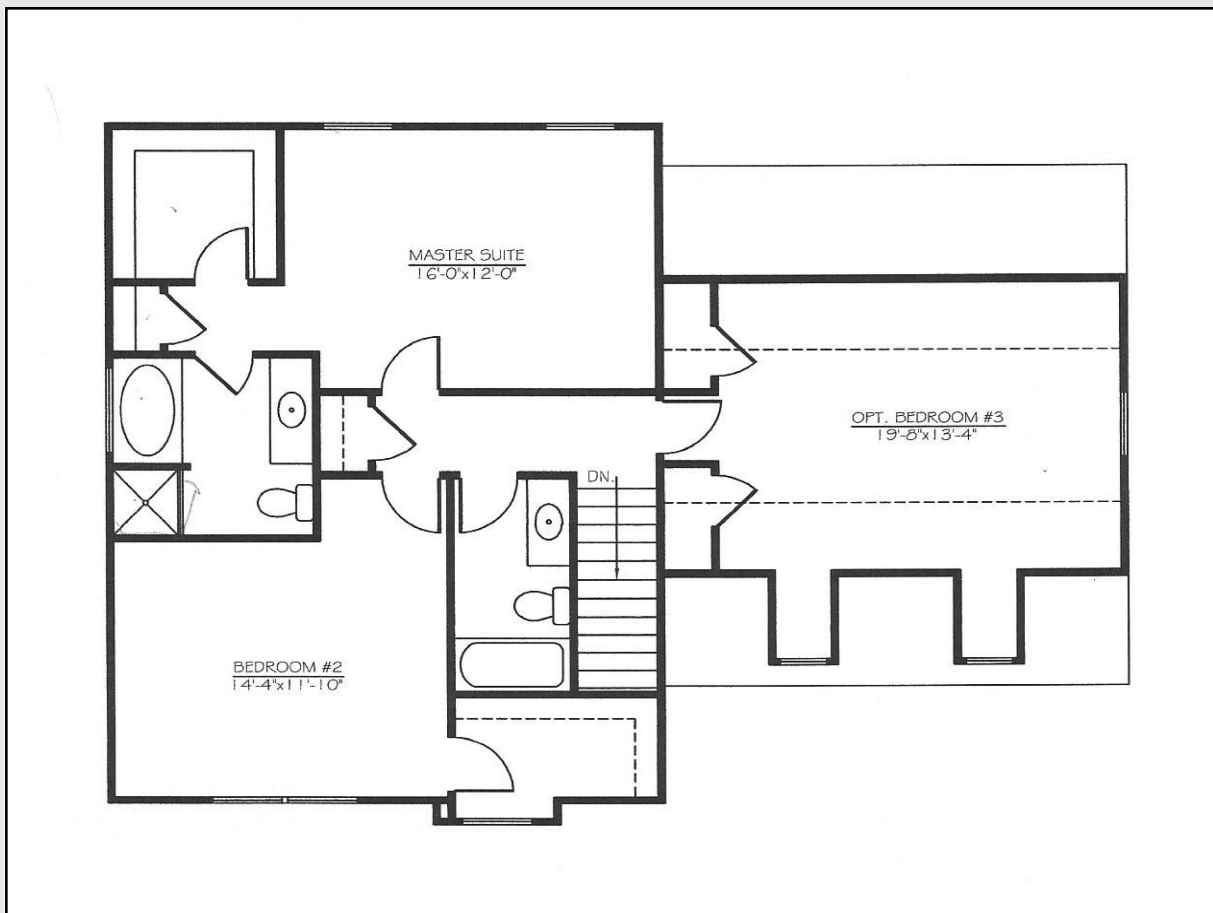
Most Layouts Can Be Customized To Meet Your Individual Needs – Please Ask Our Sales Staff!

The Oxford 2nd Floor with Expanded Bedrooms



Most Layouts Can Be Customized To Meet Your Individual Needs – Please Ask Our Sales Staff!

The Oxford 2nd Floor with Expanded Bedrooms & Luxury Master Bath



Most Layouts Can Be Customized To Meet Your Individual Needs – Please Ask Our Sales Staff!