

The Holly Knoll Model



The Holly Knoll Model

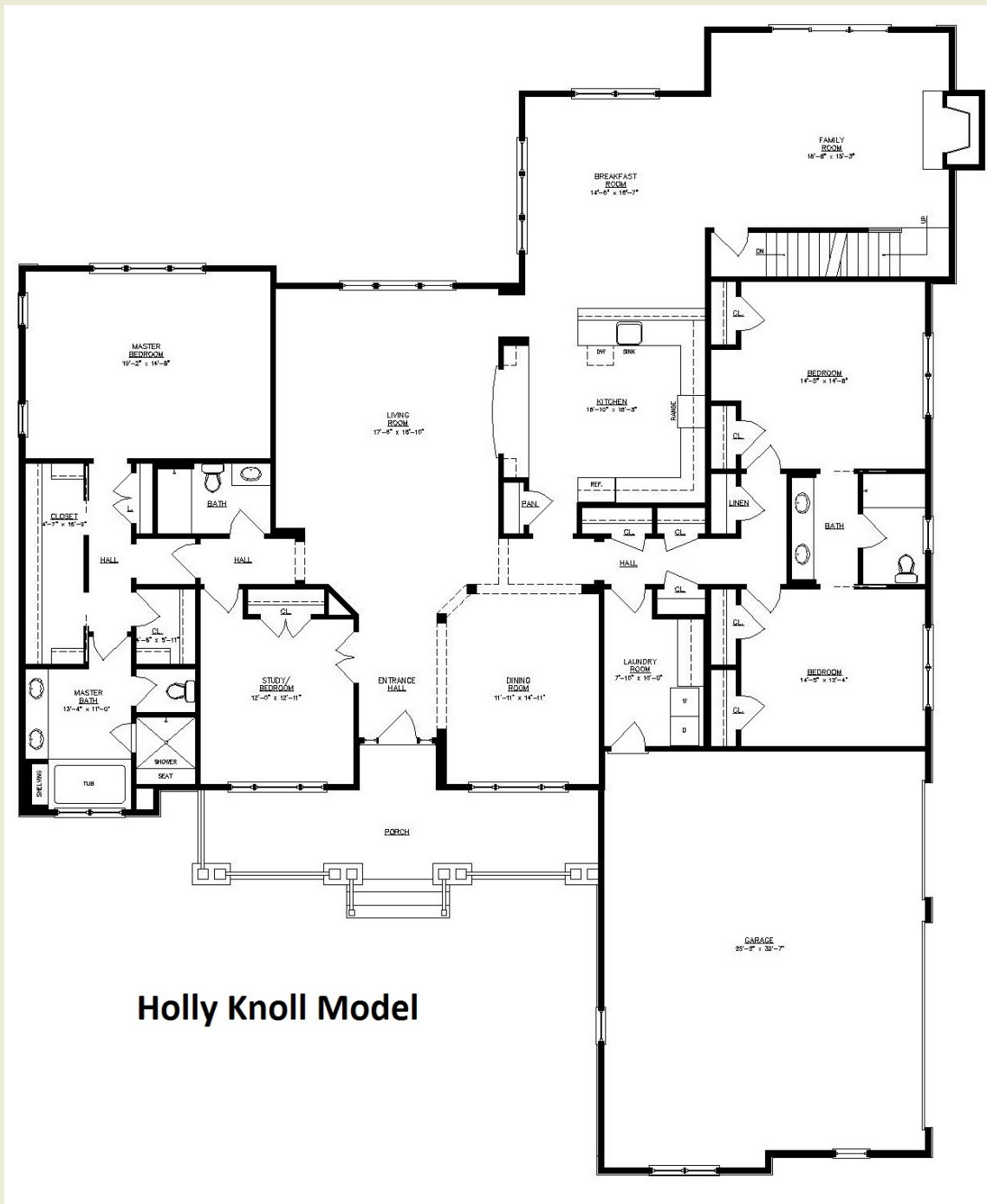
The Holly Knoll is a 3 to 4 bedroom 2.5 bath home that is expandable by adding additional living space to the second floor. It is a very open and spacious home with lots of room for entertaining. The custom kitchen flows to the dining and family rooms. When entering the home the dining room is on one side of the foyer and a study or extra bedroom is on the other. There is a large living room in the center of the home and also a family room behind the breakfast and kitchen area. From the garage you enter into a mud room / laundry area before entering the hall off the kitchen area. Some of the most popular options and upgrades include hardwood floors, custom kitchen choices, a gas fireplace and finished basement to mention a few. The front elevation can be done in Stone, Brick, Siding or a combination of all three. We welcome your custom revisions! Please inquire with one of our sales staff for more information and options. The Faun Model comes standard with a front loading garage and also offers the option of a turned garage.

- **Custom Kitchen**
- **3/4 Bedroom**
- **Luxurious Master Suite**
- **2.5 Bathrooms**
- **3 car turned garage.**
- **Hardwood Flooring and Ceramic Tile are available**

Jillian's Way 302-328-0280 x 542 www.JilliansWay.com

Peyton's Grove 302-328-0280 x 544 www.PeytonsGrove.com

“ The First Floor Layout with Turned Garage Option ”



Most Layouts Can Be Customized To Meet Your Individual Needs - Please Ask Our Sales Staff!

All Pricing and Terms are subject to change without notice. Sizes are approximate when specified.