

The Faun Model



The Faun Model

The Faun Model is a 5 bedroom 2.5 bath home with an expansive and open floor plan. On the second level there are five spacious bedrooms which include the Master Suite. In the Master Bath is water closet, large walk-in closet, soaking tub and shower. The custom kitchen flows to the dining and family rooms. When entering the home the dining room is on one side of the foyer and the living room is on the other. From the garage you enter into a mud room and pantry before entering the kitchen area. Some of the most popular options and upgrades include hardwood floors, custom kitchen choices, a gas fireplace and finished basement to mention a few. The front elevation can be done in Stone, Brick, Siding or a combination of all three. We welcome your custom revisions! Please inquire with one of our sales staff for more information and options. The Faun Model comes standard with a front loading garage and also offers the option of a turned garage.

- **5 Bedroom**
- **Luxurious Master Suite**
- **2.5 Bathrooms**
- **2 Car front or turned garage.**
- **Hardwood Flooring and Ceramic Tile are available**

Jillian's Way 302-328-0280 x 542 www.JilliansWay.com

Peyton's Grove 302-328-0280 x 544 www.PeytonsGrove.com

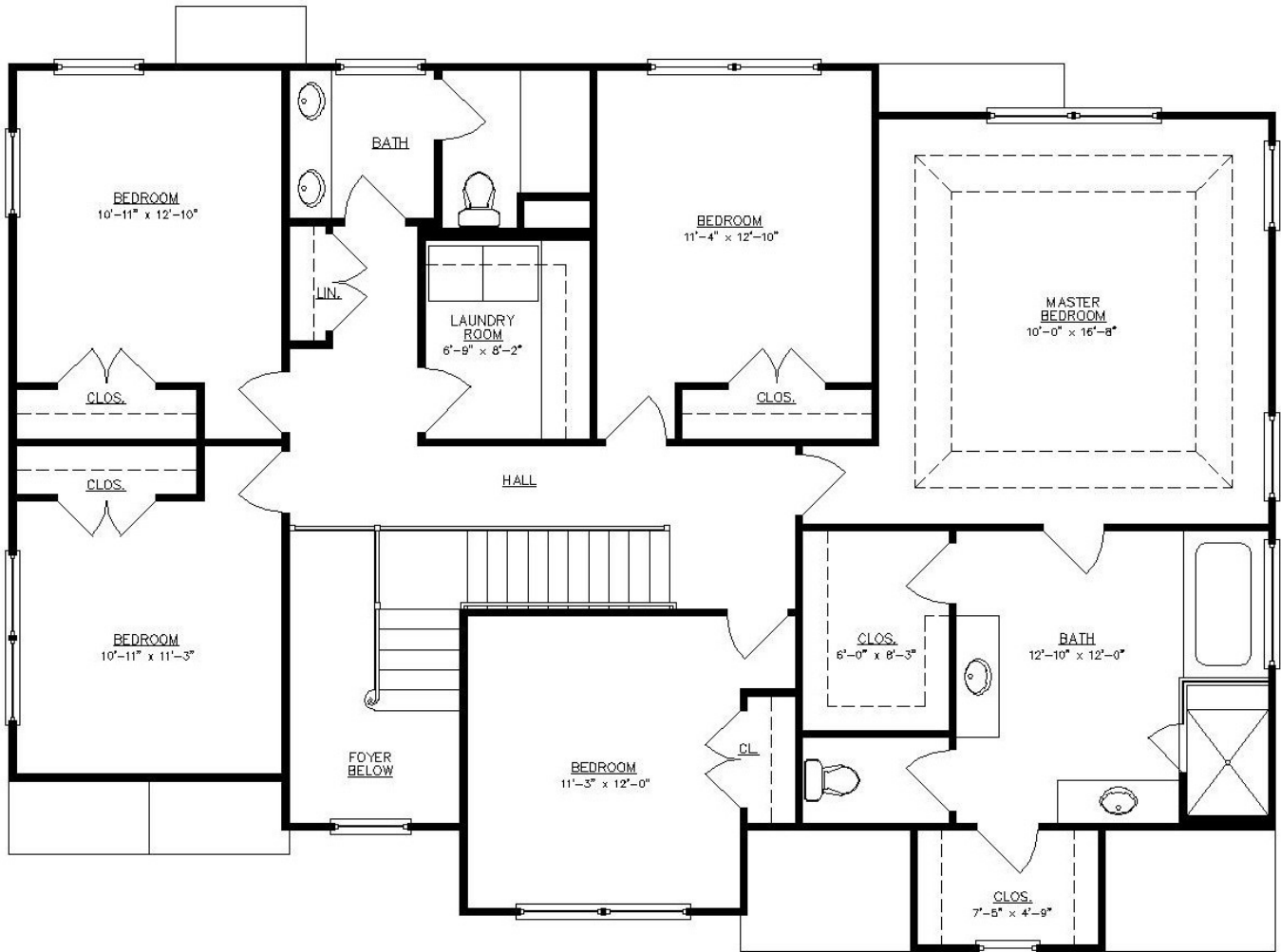
“ The First Floor Layout with Turned Garage Option ”



Faun Model - With Turned Garage Option

Most Layouts Can Be Customized To Meet Your Individual Needs - Please Ask Our Sales Staff!

“ The Second Floor Layout ”



Faun Model - Second Floor

Most Layouts Can Be Customized To Meet Your Individual Needs - Please Ask Our Sales Staff!

“ Pictures From Previous Versions of The Faun Model ”



Most Layouts Can Be Customized To Meet Your Individual Needs - Please Ask Our Sales Staff!