

# The Bayard Model



The Bayard Model

The Bayard Model is a modern styled home with an open floor plan that is flexible and can be customized to meet your individual living style. This model is very similar to our Washington Model but has a two car garage with a two story foyer. There are many options available including hardwood floors, custom kitchen choices, a second floor laundry, nine foot first floor ceilings, gas fireplace , a walk out basement when grade allows and a finished basement. The base model is a 4 bedroom home with 2.5 baths The front elevation can be done in Stone, Brick, Siding or a combination of all three. We welcome your custom revisions! Please inquire with one of our sales staff for more information and options.



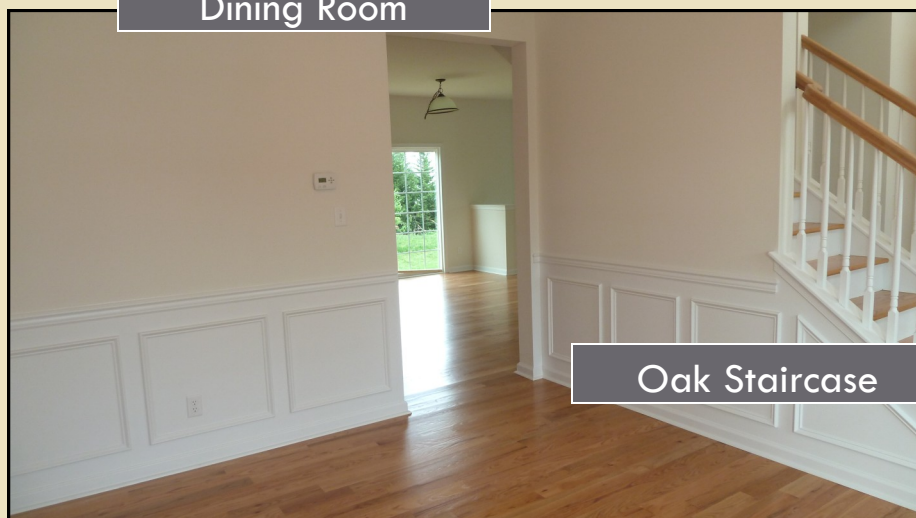
- **4 Bedrooms**
- **2.5 Bathrooms**
- **Many options and upgrades available**
- **9' 1st Floor Ceilings are available**
- **Hardwood Flooring and Ceramic Tile is available**

Jillian's Way 302-328-0280 x 542 [www.JilliansWay.com](http://www.JilliansWay.com)

Peyton's Grove 302-328-0280 x 544 [www.PeytonsGrove.com](http://www.PeytonsGrove.com)

# SOME OF THE FEATURES

Dining Room



Oak Staircase



Open Floor Plan

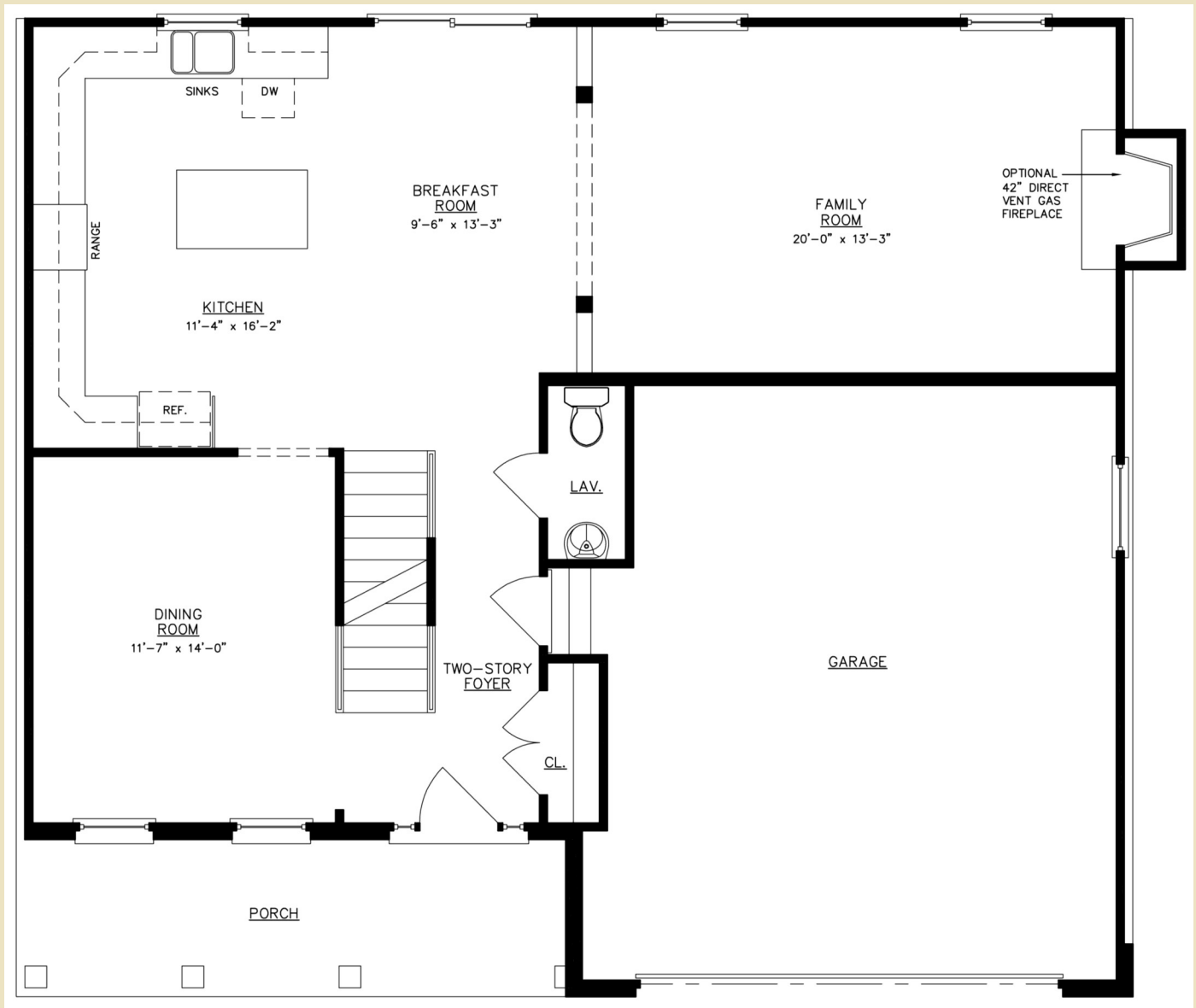


Gas Fireplace



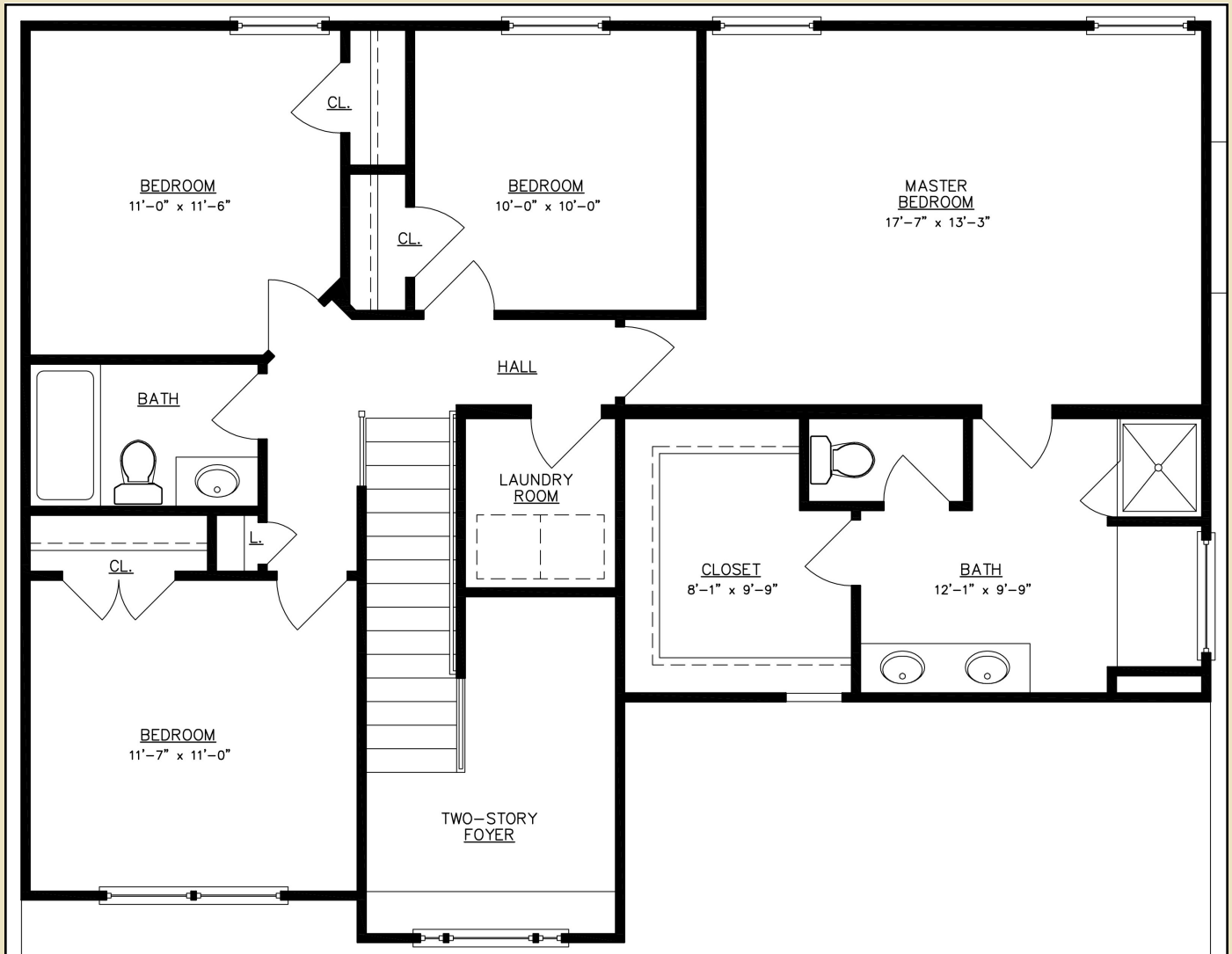
**Many more options and upgrades are available. Please ask our sales staff for additional information.**

# “ The First Floor Layout ”



**Most Layouts Can Be Customized To Meet Your Individual Needs - Please Ask Our Sales Staff!**

# “ The Second Floor Layout ”



**Most Layouts Can Be Customized To Meet Your Individual Needs - Please Ask Our Sales Staff!**

All Pricing and Terms are subject to change without notice. Sizes are approximate when specified.